



TORPEDO 2 DATA LOGGER

OUR MOST
PORTABLE LOGGER

SCAN FOR MORE

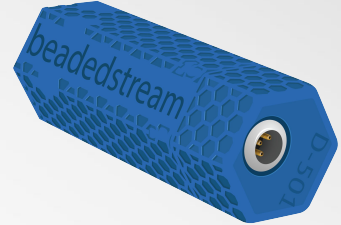


Collect a spot reading of all sensors on a **beadedstream** digital temperature cable or measure trends with long-term logging features. The Torpedo 2 is our most portable data logger and comes with advanced Bluetooth wireless technology. Connect over the air using *Capture*, our iOS app.



Seamlessly connect with our iOS app through bluetooth

TORPEDO 2 DATA LOGGER



SPECIFICATIONS

Communication	<ul style="list-style-type: none">• Bluetooth 4.2 wireless interface• Compatible with <i>Capture</i>, beadedstream's iOS app
Contactless Switch	<ul style="list-style-type: none">• Built-in magnetic switch is immune to dust, dirt, mud and water• Triggers through the case for spot readings and Bluetooth wake
Ports	<ul style="list-style-type: none">• 4 plug & play Digital Temperature Cable (DTC) ports connect up to 100 sensors
Data Storage	<ul style="list-style-type: none">• Capacity for over 1 million temperature readings• Non-volatile flash memory survives even if battery dies
Hardware/Firmware	<ul style="list-style-type: none">• Ultra low-power, high performance industrial microcontroller• Multi-threaded custom embedded OS
Battery / Power	<ul style="list-style-type: none">• 7.2 V 8.5 AHr lithium primary cell (non-rechargeable)• 1 year minimum endurance• Sleep mode: 90 μA, Active mode: 70 mA (typical)
Real Time Clock	<ul style="list-style-type: none">• \pm 5 minutes per year (temperature compensated)
Operating Range	<ul style="list-style-type: none">• -40° C to +85° C (-40° F to +185° F)• NEMA Type 4X/IP68
Mounting	<ul style="list-style-type: none">• Body has two indentations for hose clamp interfacing
Weight and Dimensions	<ul style="list-style-type: none">• 0.38 kg (0.84 lb)• 2.75" x 2.5" x 7.25" (7 cm x 6.4 cm x 18.4 cm)